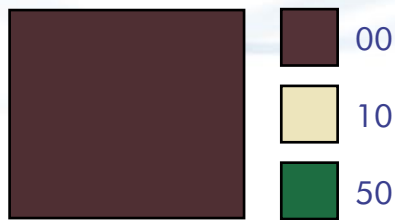


## MECHOVÁ NA VLOŽKY



Dessin 300



Dessin 300



Dessin 300

Dessin 303

Dessin 305



Dessin 309

Dessin 310

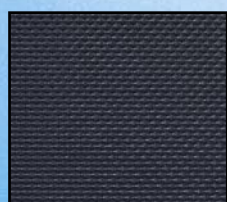
Dessin 315



Dessin 316

Dessin 317

Dessin 340



Dessin 343



Dessin 300

Nr.	Dessin	Maße	Härte	Dichte
8052	300	1050×950	30 ShA	0,24 g/cm <sup>3</sup>

## NEOPREN

Nr.	Dessin	Maße	Härte	Dichte
dovoz	300	2100×1300	---	0,25 g/cm <sup>3</sup>

## STYROPOR

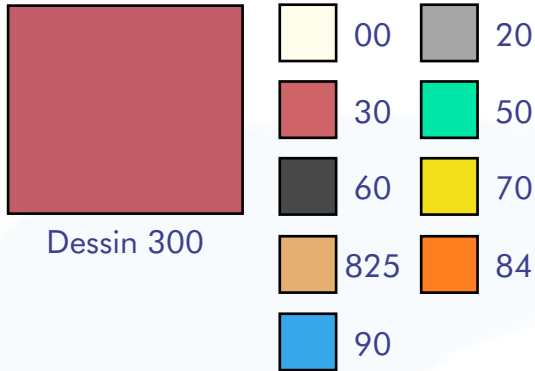
Nr.	Dessin	Maße	Härte	Dichte
P 050	300	1100×1000	48 ShA	0,38 g/cm <sup>3</sup>
P 050	303	1100×1000	48 ShA	0,38 g/cm <sup>3</sup>
	305			
	310			
	340			
	343			
P 050	309	1100×900	48 ShA	0,38 g/cm <sup>3</sup>
P 050	315	1100×950	48 ShA	0,38 g/cm <sup>3</sup>
	316			
P 050	317	1200×900	48 ShA	0,38 g/cm <sup>3</sup>



## LEHČENÉ PLOTNY PRO ORTOPEDII KORKPORETEN

Nr.	Dessin	Maße	Härte	Dichte
8585	300	1100×900	32 ShA	0,20 g/cm <sup>3</sup>

## PLOTNY Z LEHČENÉHO PE PORETEN



Nr.	Dessin	Maße	Härte	Dichte
8180	300	1050×800	neuvádí	0,06 g/cm <sup>3</sup>
8381	300	1050×800	neuvádí	0,06 g/cm <sup>3</sup>
8470	300	1100×850	neuvádí	0,04 g/cm <sup>3</sup>



Dessin 300

## GALAPOR

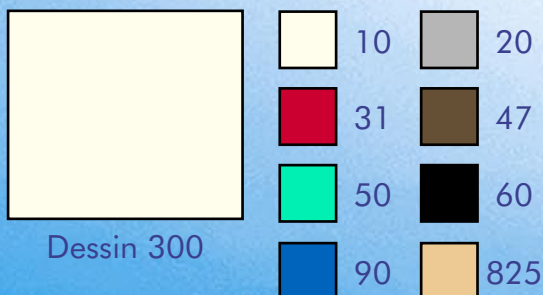
Nr.	tloušťka	Maße	Härte	Dichte
7182	23 mm	1020×1020	18 ShA	0,10 g/cm <sup>3</sup>
7182	30 mm	1350×1150	18 ShA	0,10 g/cm <sup>3</sup>



Dessin 300

## TONAPOR

Nr.	tloušťka	Maße	Härte	Dichte
7183	23 mm	1050×1050	25 ShA	0,12 g/cm <sup>3</sup>
7183	26 mm	1250×1050	25 ShA	0,12 g/cm <sup>3</sup>
7183	30 mm 34 mm	1300×1100	25 ShA	0,12 g/cm <sup>3</sup>



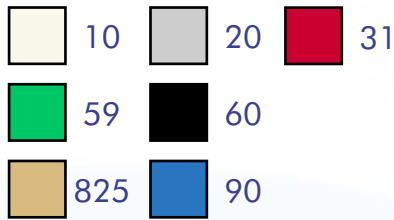
## KONTYPOR

Nr.	Dessin	Maße	Härte	Dichte
7184	300	1200×1000	20 ShA	0,12 g/cm <sup>3</sup>

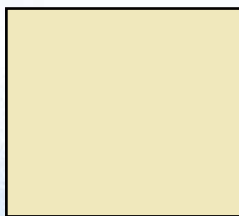
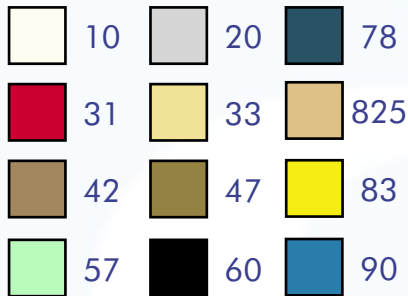
## LEHČENÉ PLOTNY PRO ORTOPEDII



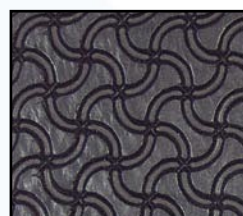
Dessin 300



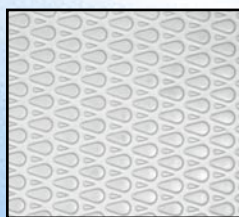
Dessin 300



Dessin 300



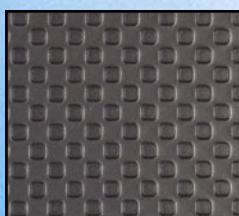
Dessin 317



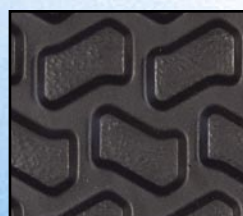
Dessin 318



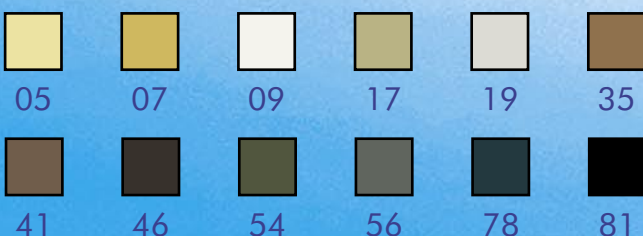
Dessin 319



Dessin 320



Dessin 342



### SUPERPOR

Nr.	Dessin	Maße	Härte	Dichte
8581	300	1250×1000	25 ShA	0,16 g/cm <sup>3</sup>

### MEDIAPOR

Nr.	Dessin	Maße	Härte	Dichte
8583	300	1150×950	33 ShA	0,18 g/cm <sup>3</sup>

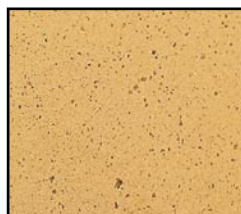
### EVAC – PLOTNY

Nr.	Dessin	Maße	Härte	Dichte
6175	300	1030×1030	50 ShA	0,40 g/cm <sup>3</sup>
6178	300	1070×900	28 ShA	0,23 g/cm <sup>3</sup>
6240	300	1070×900	40 ShA	0,21 g/cm <sup>3</sup>
6245	300	1030×1030	45 ShA	0,30 g/cm <sup>3</sup>
6255	300	1030×1030	58 ShA	0,30 g/cm <sup>3</sup>
6265	300	1030×1030	65 ShA	0,28 g/cm <sup>3</sup>
6350	300	1030×1030	54 ShA	0,28 g/cm <sup>3</sup>
8173	300	1030×1030	32 ShA	0,26 g/cm <sup>3</sup>
6245	317	1200×930	45 ShA	0,32 g/cm <sup>3</sup>
6245	318	1050×950	45 ShA	0,32 g/cm <sup>3</sup>
6245	319	1100×950	45 ShA	0,32 g/cm <sup>3</sup>
6245	320	1100×950	45 ShA	0,32 g/cm <sup>3</sup>
6245	342	1100×950	45 ShA	0,32 g/cm <sup>3</sup>

### EVAC – PLOTNY – DUROTEN

Nr.	Dessin	Maße	Härte	Dichte
8485	300	1280×1030	40 ShA	0,17 g/cm <sup>3</sup>
8486	300	1150×900	48 ShA	0,20 g/cm <sup>3</sup>
8486	310 305	1200×1150	48 ShA	0,20 g/cm <sup>3</sup>
8486	303	1250×1100	48 ShA	0,20 g/cm <sup>3</sup>
8486	317	1320×1000	48 ShA	0,20 g/cm <sup>3</sup>
8486	341	1200×1200	48 ShA	0,20 g/cm <sup>3</sup>
8487	300	1050×900	55 ShA	0,27 g/cm <sup>3</sup>
8487	317	1320×1000	55 ShA	0,27 g/cm <sup>3</sup>

## KORKFANT



Dessin 300

Nr.	Dessin	Maße	Härte	Dichte
8182	300	1050×1050	37 ShA	0,27 g/cm <sup>3</sup>
8185	300	1100×960	55 ShA	0,32 g/cm <sup>3</sup>
8184	300	1100×960	60 ShA	0,32 g/cm <sup>3</sup>
8186	300	1100×950	65 ShA	0,35 g/cm <sup>3</sup>

## KOMPAKTNÍ PLOTNY

### OPRAVÁŘSKÉ

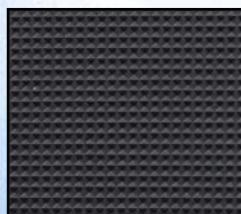


Dessin 302

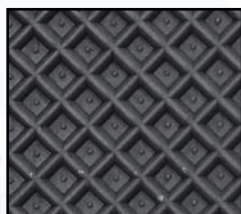


Dessin 303

Nr.	Maße	Härte	Dichte	Abrieb
9002	1100×720	72 ShA	1,20 g/cm <sup>3</sup>	360 mm <sup>3</sup>
9157	1100×720	70 ShA	1,24 g/cm <sup>3</sup>	160 mm <sup>3</sup>



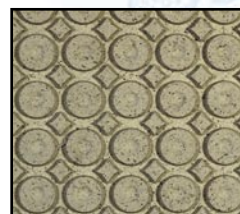
Dessin 305



Dessin 307



Dessin 310



Dessin 331

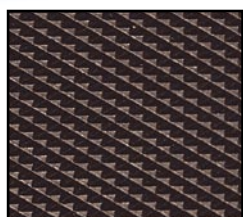


Dessin 301



## OBOLIT

Nr.	Maße	Härte	Dichte	Abrieb
8221	1100×720	91 ShA	1,25 g/cm <sup>3</sup>	570 mm <sup>3</sup>

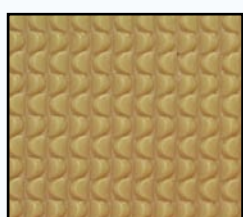


Dessin 306



## PATNÍKOVÁ PVC

Nr.	Maße	Härte	Dichte	Abrieb
9203	1100×720	95 ShA	1,16 g/cm <sup>3</sup>	350 mm <sup>3</sup>



Dessin 314

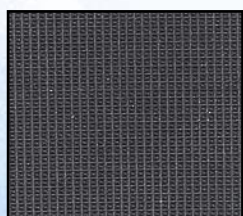


Dessin 307

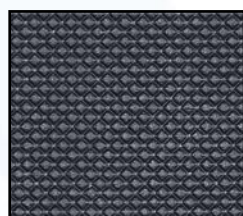


## TRANSPARENTNÍ

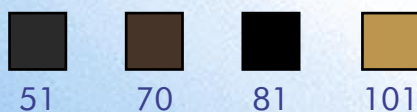
Nr.	Maße	Härte	Dichte	Abrieb
9508	1100×720	53 ShA	1,07 g/cm <sup>3</sup>	230 mm <sup>3</sup>



Dessin 322

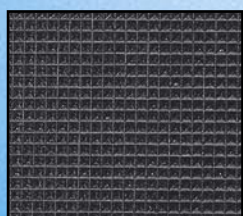


Dessin 351

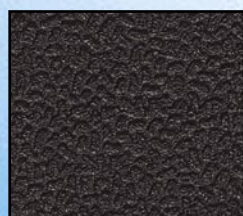


## PYRAMIDA

Nr.	dezén	Maße	Härte	Dichte	Abrieb
6748	322	1100×720	90 ShA	1,19 g/cm <sup>3</sup>	200 mm <sup>3</sup>
6748	351	960×770	90 ShA	1,19 g/cm <sup>3</sup>	200 mm <sup>3</sup>



Dessin 305



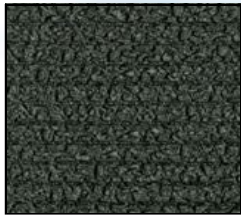
Dessin 310



## ITALKA

Nr.	Maße	Härte	Dichte	Abrieb
9001	1100×720	78 ShA	1,27 g/cm <sup>3</sup>	530 mm <sup>3</sup>
9111	1100×720	78 ShA	1,22 g/cm <sup>3</sup>	450 mm <sup>3</sup>

## JEMNÁ CREPA



Dessin 311



Dessin 321



09



16



17



19



20



46



54

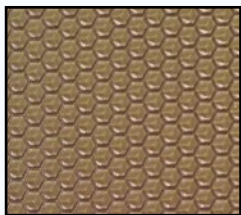


56

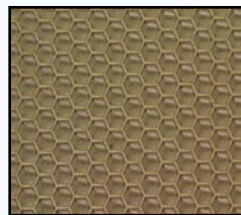


81

Nr.	Maße	Härte	Dichte	Abrieb
6509	1030×680	68 ShA	1,15 g/cm <sup>3</sup>	220 mm <sup>3</sup>
9605	1030×680	93 ShA	1,15 g/cm <sup>3</sup>	350 mm <sup>3</sup>
9605	1100×720	93 ShA	1,15 g/cm <sup>3</sup>	350 mm <sup>3</sup>



Dessin 326



Dessin 327



16



17



54



81

## PLOTNY VČELÍ PLAST

Nr.	Maße	Härte	Dichte	Abrieb
6509	1100×720	68 ShA	1,15 g/cm <sup>3</sup>	220 mm <sup>3</sup>



Dessin 332



09



17



19



35



41



46



54



56



78



81

## PLOTNA STERN

Nr.	Maße	Härte	Dichte
6506	1200×800	58 ShA	0,65 g/cm <sup>3</sup>
6516	1200×800	63 ShA	0,80 g/cm <sup>3</sup>



Dessin 339



46



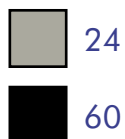
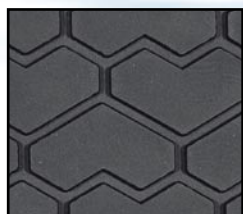
54



81

## GIULIO

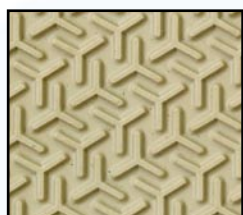
Nr.	Maße	Härte	Dichte
6825	920×780	52 ShA	0.75 g/cm <sup>3</sup>



Dessin 350

## PNEU

Nr.	Maße	Härte	Dichte	Abrieb
9072	1100×720	62 ShA	1,12 g/cm <sup>3</sup>	100 mm <sup>3</sup>



Dessin 353

## SLOT

Nr.	Maße	Härte	Dichte	Abrieb
6509	1000×800	68 ShA	1,15 g/cm <sup>3</sup>	220 mm <sup>3</sup>

